

## UNE MER DEUX RIVAGES

Exhibition of the results of the workshop at the Maison de l'Art Contemporain  
in Asilah / Morocco

Kindly supported by Senatskanzlei - Kulturelle Angelegenheiten Berlin

26th of September until 26th of December 2014



The Strait of Gibraltar sees the constant mingling, in both directions, of the waters of the Atlantic and the Mediterranean, which is also known as a marginal sea of the Atlantic because of its origins about 5.33 million years ago. The geographical and historical conditions of this waterway that separates the African from the European continent and our desire for connectedness and exchange are symbolized in the title of this exhibition that was initiated by Angiola Bonanni.

**Cristina Ataíde (Portugal) [www.cristinataide.com](http://www.cristinataide.com)**

**Angiola Bonanni (Italy) [www.angiolabonanni.com](http://www.angiolabonanni.com)**

**Marie Filippovová (Czech Republic) [vimeo.com/71725437](https://vimeo.com/71725437)**

**Ahlam Lemseffer (Morocco) [www.Ahlam-art.com](http://www.Ahlam-art.com)**

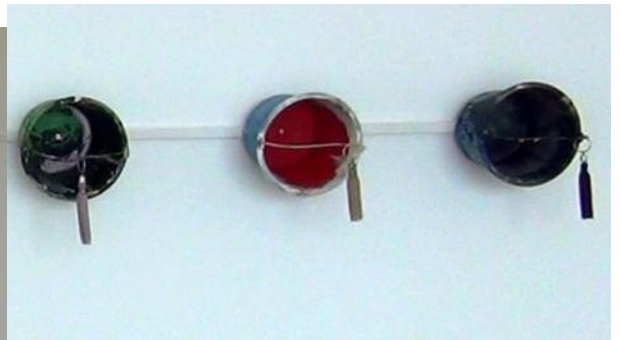
**Gisela Weimann (Germany) [www.giselaweimann.de](http://www.giselaweimann.de)**

‘Une mer deux rivages’, designed as a research-in-progress, is the first phase of our 4+1 project that brings together artists from different cultural backgrounds to live and work. Mediated by the Moroccan artist and curator Said Messari, it took place at the cultural centre MAC.A, founded in 2012 by a Moroccan cultural association with a view to enabling the encounter among artists and intellectuals from around the world in order to promote and communicate to the public the human values of peace, tolerance and understanding. The spacious building, flooded with light was designed by the architect Abdelilah Mseffer and is situated directly on the beach in Asilah-Briech.

For the European artists it was a departure toward new horizons in North Africa, in the opposite direction to the flow of refugees who risk their lives by trying to reach the European shores. Several weeks of sharing the daily life and creating work in dialogue, the genuine exchange of ideas and experiences, the encounter with the great tradition of Arab art and culture as well as the confrontation with our preconceptions and critical views of Europe through meetings, lectures and conversations is what we want to continue in other countries as well to expand and change our vision of the world and build up a network of reciprocity and friendship.

Tour of the exhibition

Entrance



Gisela Weimann „Dîner à la Maison des Artistes“, installation with found objects from the studios, 2014  
Photos: Gisela Weimann

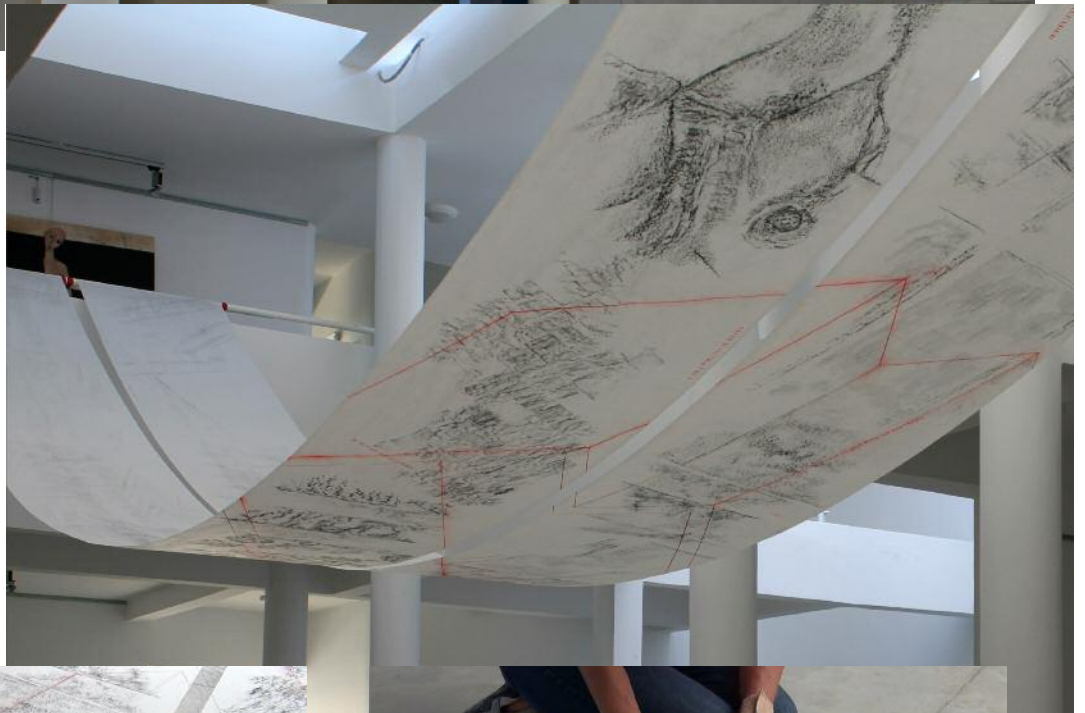
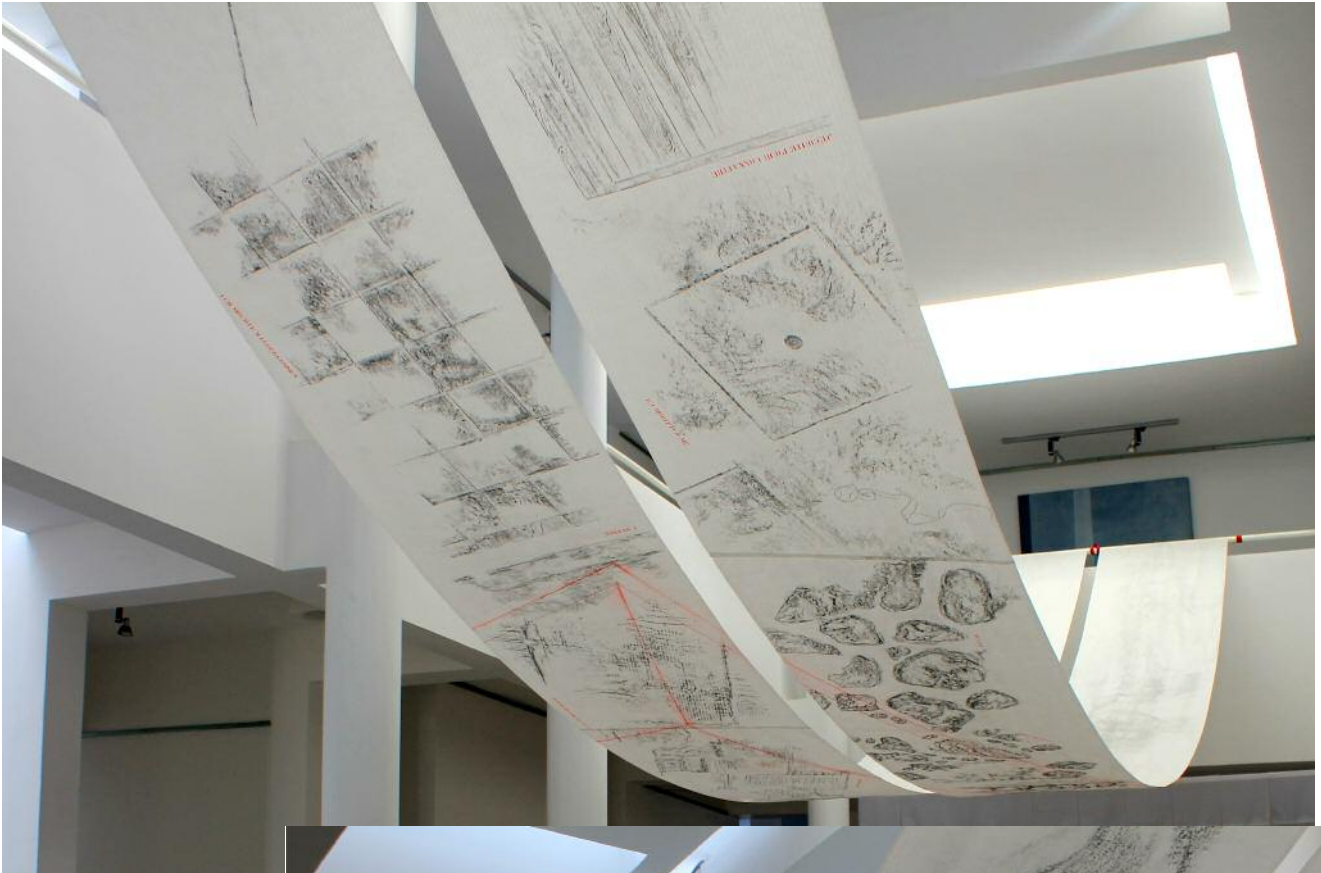
General view of the central space



Works by Angiola Bonanni (top in the background and bottom right), Cristina Ataíde (top and bottom in the middle), Ahlam Lemseffer (objects top left and right), Gisela Weimann (bottom left in the background)

Photos: Cristina Ataíde

Cristina Ataíde



„Moi se suis / Yes I am“, graphite, colour pen and pigment on rice paper, 2 x 1m by 16 m, 2014  
Photos: Cristina Ataíde; Video stills from the work process: Gisela Weimann

**Cristina Ataíde / Angiola Bonanni**

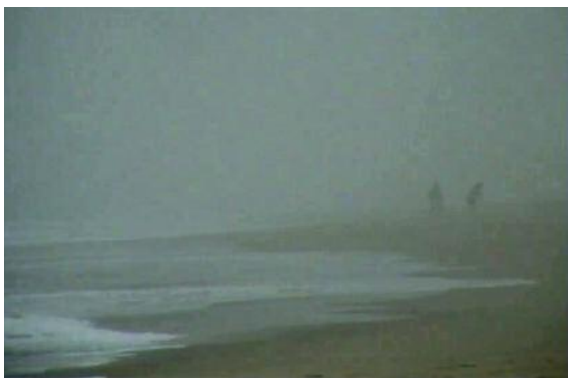
Side cabinet to the right with videos



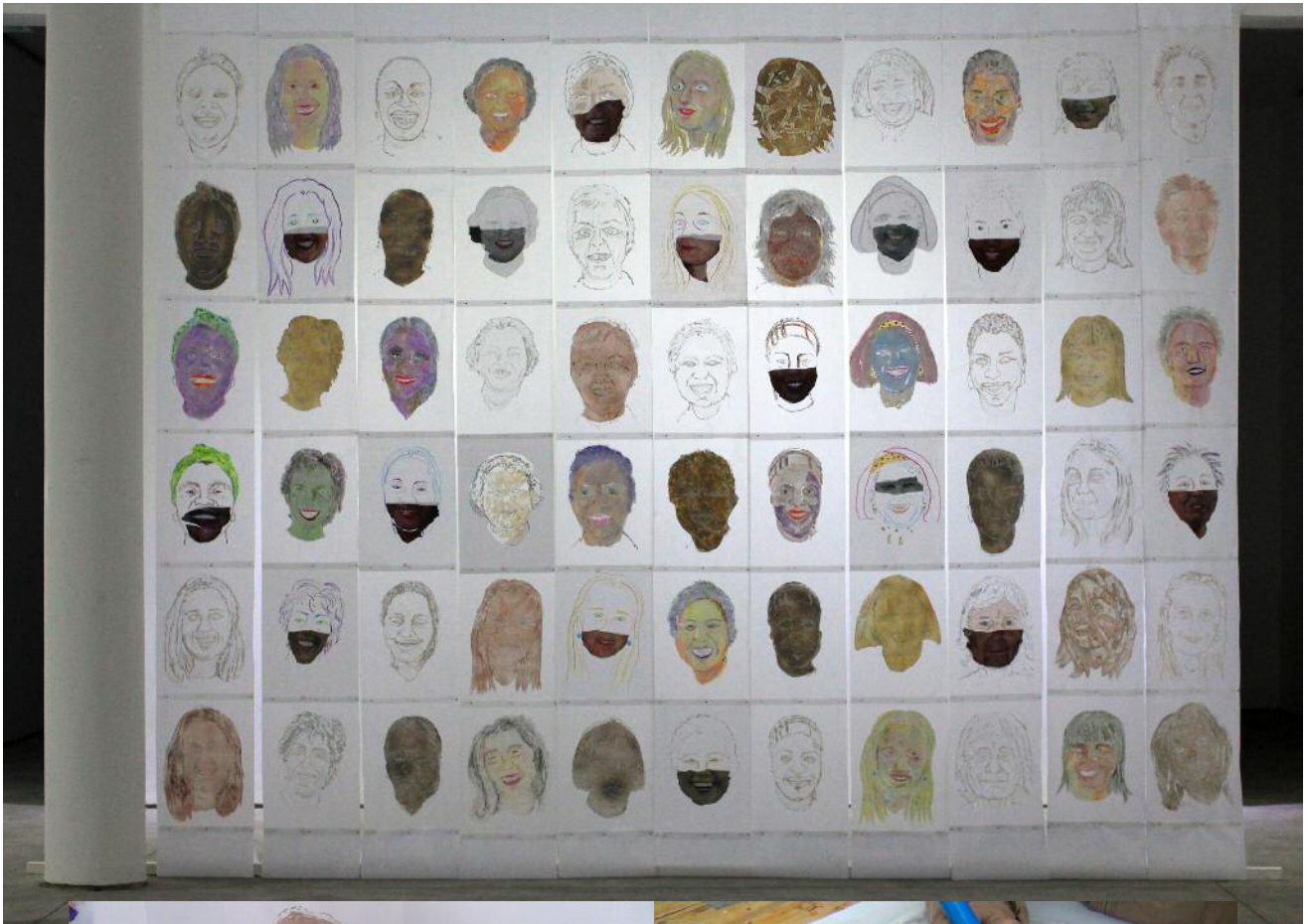
Top: Cristina Ataíde „Eclipse 2 + 3“ (series 4), 100 x 65 cm / „Desires“, red ribbons with wishes by people from all over the world (ongoing), 2014  
Photo: Luz Valiño; Video still from the work process: Gisela Weimann

Video stills

- Left: Cristina Ataíde „Nevoeiro Quente / Warm Fog“, 9:25 min., 2009
- Top right: Angiola Bonanni „Donne-moi ton sourire“, Madrid-Dakar 2013
- Bottom right: Angiola Bonanni „Semences“, Ifitry-Casablanca 2012



Angiola Bonanni



Top: „Kahkahaa“ 1, encaustic on tracing paper, nail polish, photos, 380 x 380 cm, 2014

Photo: Cristina Ataíde

Middle: video stills from the work process

Gisela Weimann

Bottom: „Kahkahaa“ 2 (detail), graphite and gloss on transparent paper, 50 x 300 cm, 2014

Photo: Gisela Weimann

**Marie Filippovová**

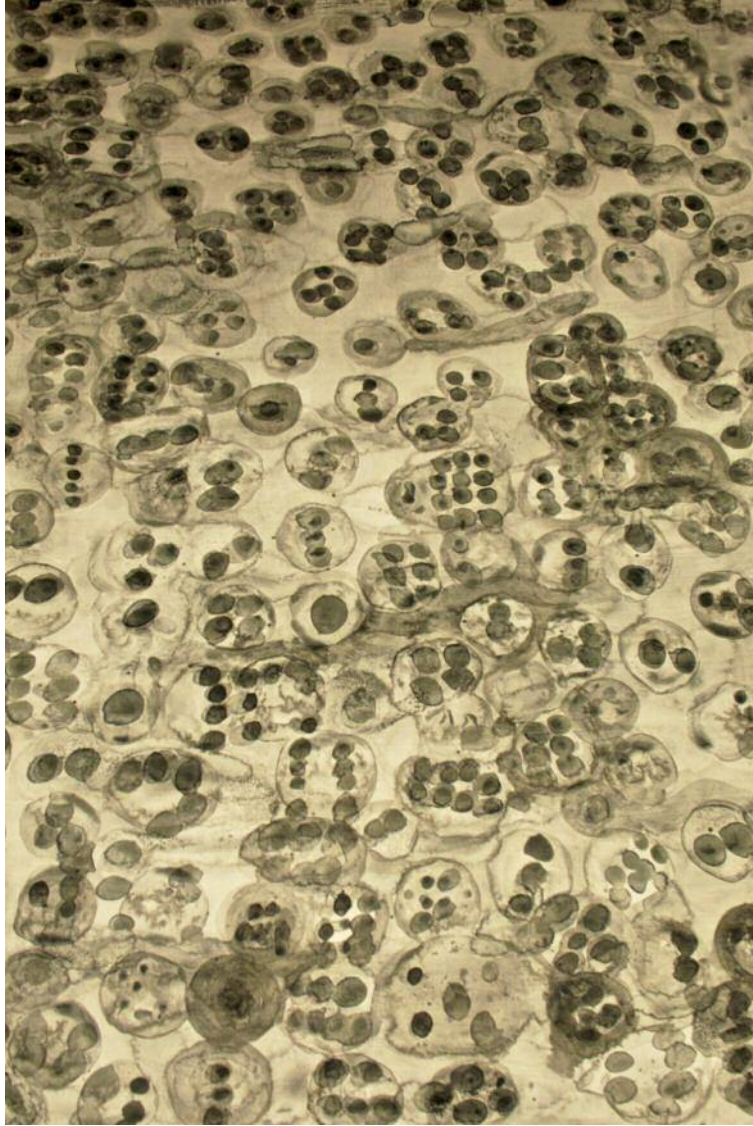
Central space and side cabinets to the left



Top: „Water“, 3 gouaches on primed paper, each 100 x 65 cm, 2014  
Bottom: „Water“ and „Stones“, gouaches on canvas, each 120 x 100 cm, 2014

Photo: Cristina Ataíde  
Photo: Luz Valiño

Marie Filippovová



Top: „Stones“, gouache on primed paper, 100 x 65 cm, 2014  
Photo: Luz Valiño; video stills from the work process: Gisela Weimann



Ahlam Lemseffer

Central space left and right

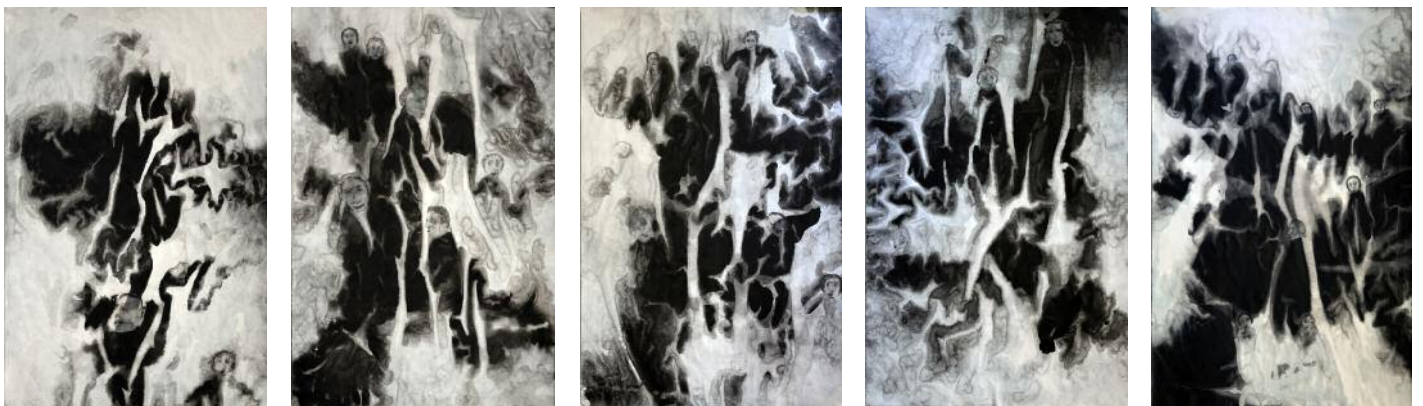


„Without title“, 3 banners 5 m, 4 m and 2,50 m x 1,50 m, acrylic on canvas / 2 objects, 2014

Photo: Cristina Ataíde; video stills from the suit and the work process: Gisela Weimann

Gisela Weimann

Central space and side cabinet to the right with videos



Top: „Figures in Space“, pigment print on rice paper, each 200 x 42,5 cm, 2014

Middle: „Song of the spirits above the waters“ 1-5, gouache and collage on primed paper, each 100 x 65 cm, 2014

Bottom: Video stills from „Emily's Guests“, Venice / Berlin 2014; „My shadow stays“, Berlin 2011-14; „La Notte Blue“, Venice / Berlin 2009-10

Photos from the work process: Cristina Ataíde and Luz Valiño; all other photos: Gisela Weimann